



A Simple Trailer Hitch

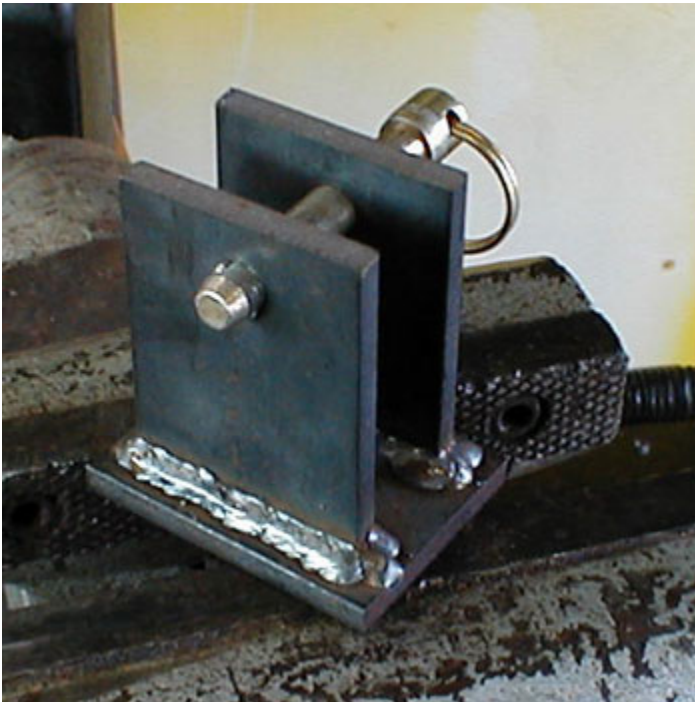
6/02

Every course has a lot of equipment and frequently it's pulled around on a trailer. Typically the trailers come with some sort of a hitch that's "made" to work with the majority of vehicles.



Frequently they don't all fit that well. We use Rubbermaid trailers pulled behind greensmowers and teemowers for clippings. You could say they had hitches on them, in that they usually worked okay. But sometimes they'd unhook.

When that would happen the trailer tongue would usually dig in and come to an abrupt stop. In one instance the trailer tongue lodged between the rear tire and frame on a Toro 3100 and took out the main hydraulic hose.



The problem was these trailers are used by a number of tow vehicles, from mowers to carryalls, and even golf carts. We came up with a fairly simple hitch to make in house. Using 1/4 X 2 flat stock, we cut pieces 2 1/2" long. Then clamping two together, drilled them with a 3/8 bit in a vise. To keep the holes aligned we used a long carriage bolt and lock the pieces in place with nuts.

The distance is determined by the thickest towbar used. Take one of the pieces and weld the other two to it. When done use a spring loaded pull pin to attach it to the tow vehicle.

Because of the close tolerance between the holes and the pin, we haven't had any problems with them coming off. I usually weld a piece of chain to the tongue and latch the pin to it.

The completed trailer hitch is then welded to the trailer tongue.

